

HT Series

4612 / 4612H / 2212 Pro / 2212H Pro

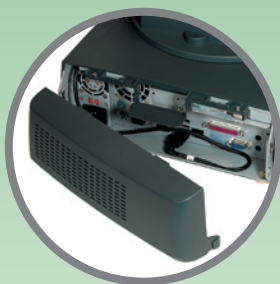


Features

- Capable of controlling 2 cash drawers
- 1 PCI extension slot for option installed
- One LAN port Ethernet 10/100/1000 Base T with LAN status indicators on jack
- Equip with 6 USB connectors
- Support 4 serial ports for numerous applications
- Compatible with windows XP, WEPOS, POSReady and Linux operating environments
- Screw-free architecture for easy maintenance access
- Spill proof design
- Concealing design allows easy routing of cables and help to conceal dangerous and unsightly cables



36 key dynakey with keylock attachment, optional: MSR, Smart card reader



Cable management design allows easy routing of cables for aesthetics and safety measures.



2-in-1 MSR and finger print sensor



Real mount customer pole display

Specification	HT-4612	HT-4612H	HT-2212 Pro	HT-2212H Pro
Processor	Intel 575 CPU (2.0GHz - 1MB Cache, 667MHz FSB) or Intel T3100 Dual Core CPU (1.9GHz - 1MB Cache, 800MHz FSB) Core 2 Duo P8400 CPU (2.26GHz - 3MB, 1066MHz FSB) Core 2 Duo T9400 CPU (2.53GHz - 6MB Cache, 1066MHz FSB)		VIA C7 1.5GHz	
System Memory	Default 1 GB DIMM socket * 2 ,DDR-2 667/800MHz ,Max 4GB		Default 512MB Expandable to 2GB DDR2 400/533 memory	
Video Memory	Support DVMT 5.0		16MB-64MB, shared with system memory	
Power Supply	+12V DC power adaptor, 80W			
Speakers	Built-in			
OS support	WEPOS, Linux, XP pro, POSReady, Win 7		WEPOS, Linux, XP pro, POSReady, Win CE	
Compliance	FCC, CE (class A), RoHS			
Display				
LCD	12.1" LCD Panel ,1024 x 768			
Touch Sensor	N/A	Resistive type	N/A	Resistive type
Tilt Adjustment	From 42.5° to 77.5°			
Expansion				
Storage Device	2.5"SATA HDD or optional SSD		80 GB or above	
Connectivity				
Stereo audio line out / mic in	YES			
CF card slot (Type II , memory card only)	N/A		Optional	
LAN Port	10/100/1000 Mb		10/100 Mb	
Parallel Port	Yes			
Serial Port	4, DB9 x 4			
UPS Port	N/A		x 1	
Standard USB Port	6 port on the I/O plate			
Proprietary USB Port	1 for side mount option			
VGA Port	D-Sub 15 pin			
CR Port	Yes, one port control 2 CRs			
PS/2 KB & MOUSE	YES			
Physical Dimension				
Dimension (W x D x H in mm)	LCD @ 15°: 295mm(W) x 264mm(D) x 341mm(H) (11.6" x 10.4" x 13.4") LCD @ 50°: 295mm(W) x 258mm(D) x 289mm(H) (11.6" x 10.2" x 11.4")		LCD @ 15°: 295mm(W) x 264mm(D) x 341mm(H) (11.6" x 10.4" x 13.4") LCD @ 50°: 295mm(W) x 258mm(D) x 289mm(H) (11.6" x 10.2" x 11.4")	
Weight (N. W. in kg)	5.3	5.6	4.9	5.2
Environment				
Operation Condition	5°C~+40°C (41°F~+104°F), 20%RH~80%RH, non-condensing max. wet bulb 26°C (78.8°F)			
Storage Condition	-20°C~60°C (-4°F~140°F), 10%RH~80%RH, non-condensing max. wet bulb 28.9°C (84.0°F)			
Options				
24V Powered Port (24V powered)	x 1, Option (Power adaptor must upgrade to 120W)		N/A	
2 nd HDD	N/A		Yes	
SD-300	USB Interface. 2-in-1 MSR and finger print sensor; MSR is UPOS 1.8 compliant. (MSR/FP Optional)			
BC-300	Bar Code card reader, USB interface			
KP-200	36 key dynakey with keylock attachment, optional: MSR, Smart card reader			
LM-2010	10.4" color LCD TFT as second display			
PD-2601	2 x 20 VFD customer display, 5 x 7 dots matrix RS232 interface default (USB interface optional)		2 x 20 VFD customer display, 5 x 7 dots matrix USB interface default (RS232 interface optional)	
PD-307U	2 x 20 LCD customer display, USB interface			
Wireless LAN	802.11 a/b/g/n with USB interface			
SSD	S-ATA I (150MB/s, minimum 8G)		N/A	
COM-5 / 6	COM-5 & COM-6			
RAID Card	RAID-1		N/A	

❖ The product information and specifications are subject to change without prior notice.

2010 V.01

Posiflex Technology (India) Pvt Ltd.

#985, 1st A Main Road, 4th Cross, New Thippasandra,
Bangalore 560 075. India
Ph : + 91 80 415 23 515 Fax:+91 80 415 36 089
Email: sales@posiflexindia.com
www.posiflexindia.com

