

Posiflex PD-2800 Drivers Installing Guide

Updated date: 2009/11/13

Installing Drivers

To install PD-2800 drivers under Windows 2000/XP/Server2003 for 32-bit base , follow the instructions below:

- Connect the device to a spare USB port on your PC. Select "No, not this time" from the options available and then click "Next" to proceed with the installation.



- Select "Install from a list or specific location (Advanced)" as shown below and then click "Next".



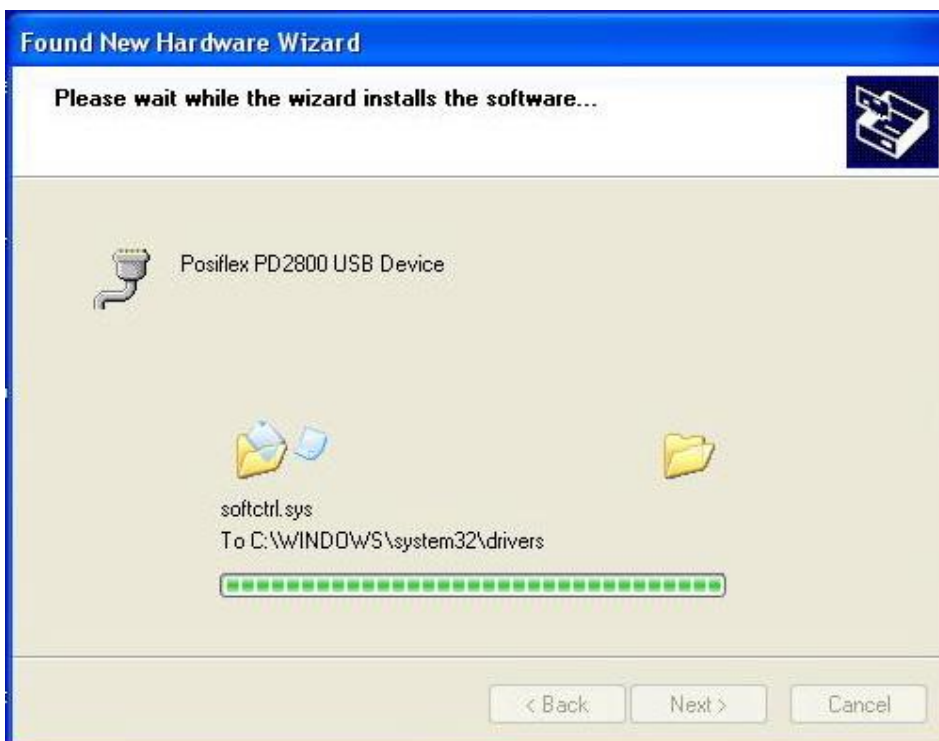
- Select "Search for the best driver in these locations" and enter the file path in the combo-box ("C:\Drivers\PD2800_320\Drivers\PD2800_320_WXP" in the example below) or browse to it by clicking the browse button. Once the file path has been entered in the box, click next to proceed.



- If Windows XP is configured to warn when unsigned (non-WHQL certified) drivers are about to be installed, the following screen will be displayed unless installing a Microsoft WHQL certified driver. Click on "Continue Anyway" to continue with the installation. If Windows XP is configured to ignore file signature warnings, no message will appear.



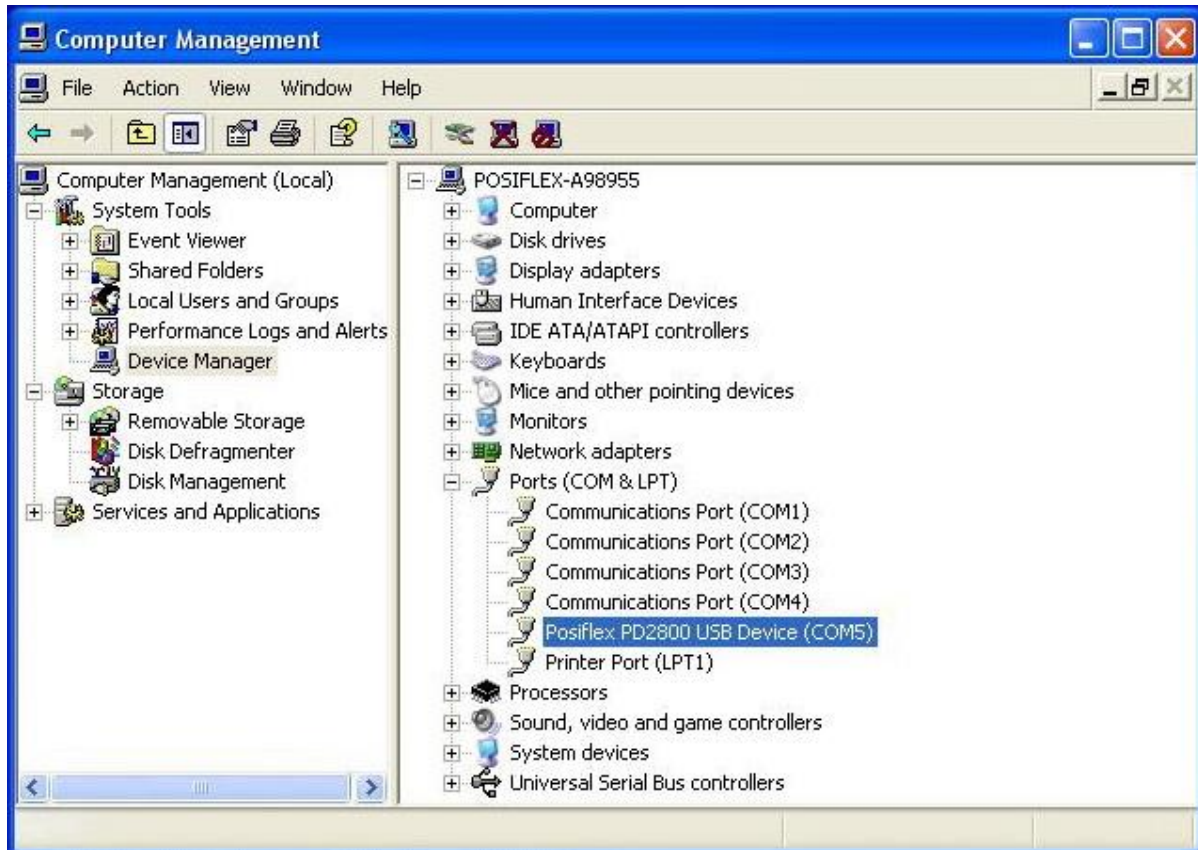
- The following screen will be displayed as Windows XP copies the required driver files.



- Windows should then display a message indicating that the installation was successful. Click "Finish" to complete the installation for the first port of the device.



- Open the Device Manager (located in "Control Panel\System") then select the "Hardware" tab and click "Device Manager") and select "Ports (COM & LPT)", the device appears an additional COM port with the label "Posiflex PD2800 USB Device(COM5)".



- This driver is to allocate a COM port using information derived from the cable's physical location on USB port. If the other cables are always plugged into the same USB port, then they will appear to the system as the same COM port.

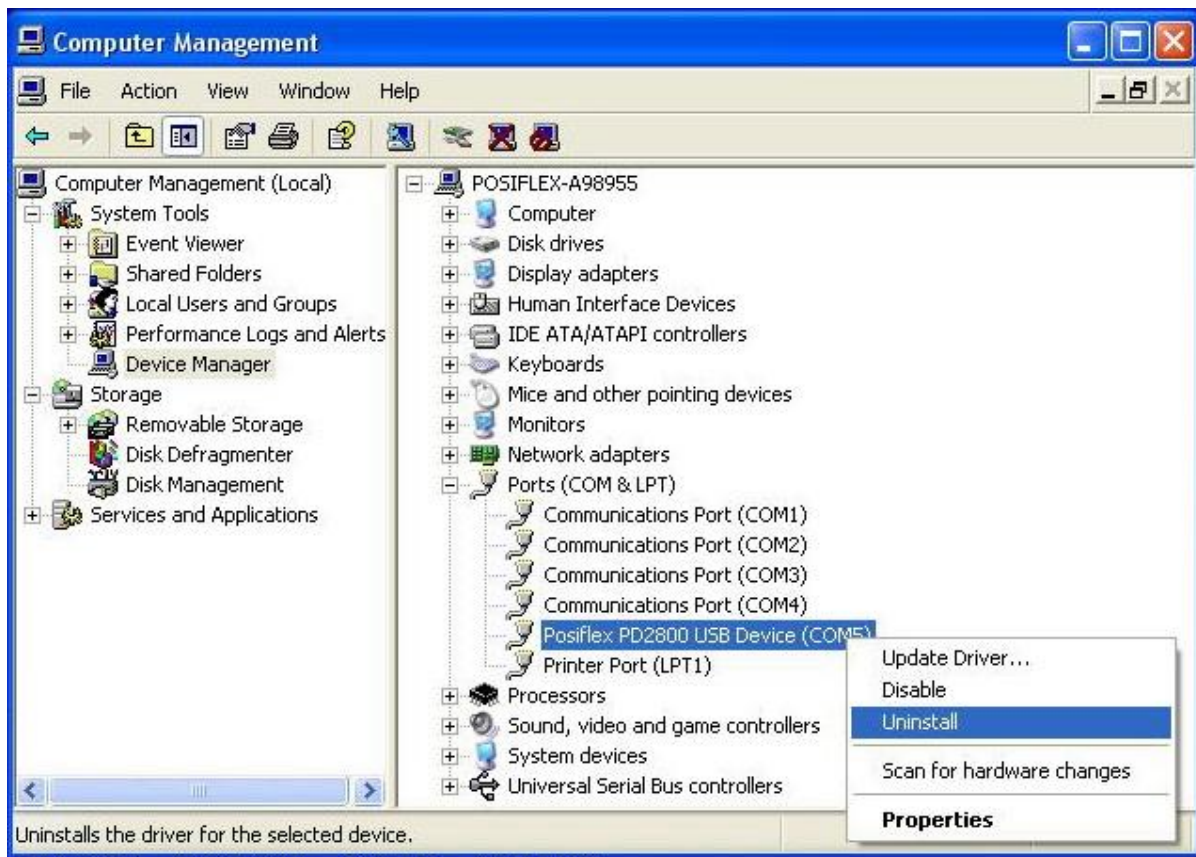
- **Limitations**

Although this driver can be used to control the number of COM ports created in the system, it cannot prevent the installation of a new USB device for every unique device that is plugged in.

Uninstalling Drivers

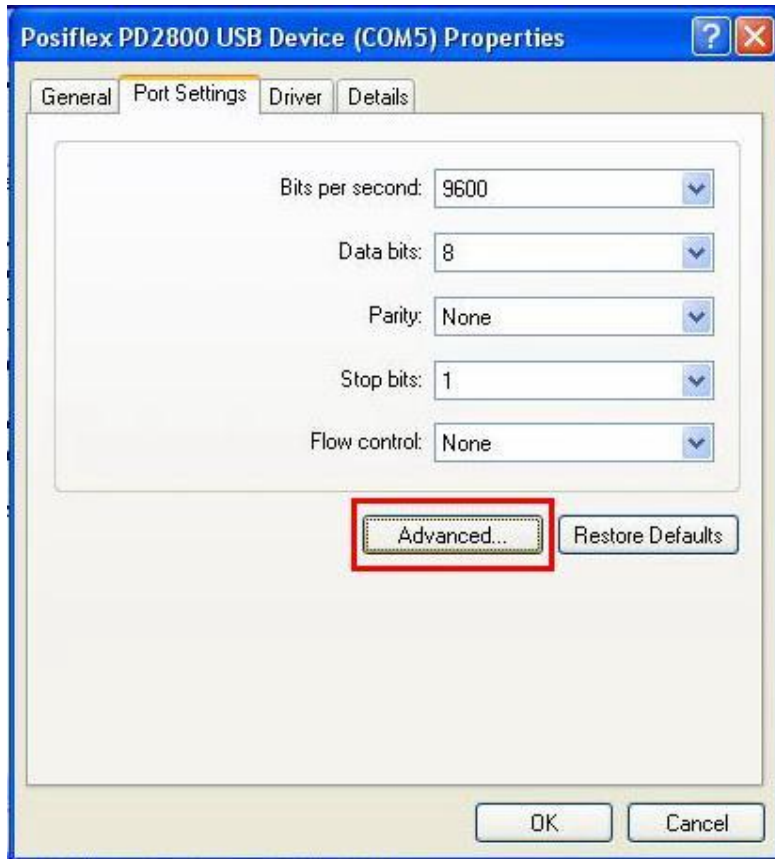
To uninstall PD-2800 drivers, follow the instructions below:

- Please connect the PD2800 device to PC.
- Open the Device Manager (located in "Control Panel\System" then select the "Hardware" tab and click "Device Manger") and select "Ports (COM & LPT)".
- Then right-click on the virtual COM port of "PD2800" and select "Uninstall" from the menu.
- Please tab "Yes" to confirm to remove PD2800 device.



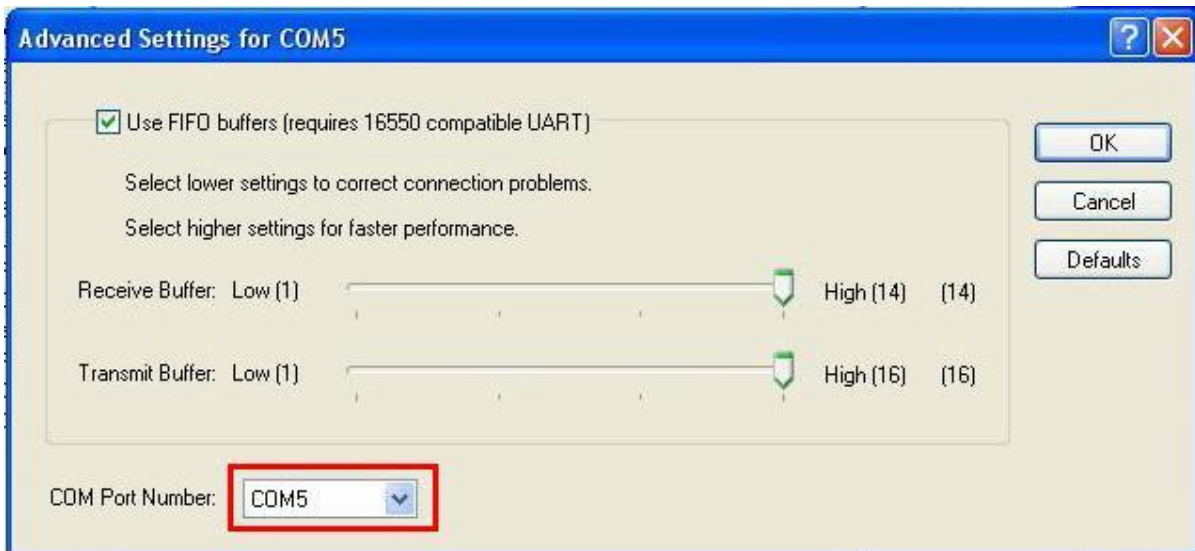
Advanced drivers options

An advanced properties page is available for devices using this drivers. To access the advanced properties page in Windows 2000 or Windows XP, go to "Control Panel > System" then select the "Hardware" tab and click "Device Manager...". Find the USB serial port you want to change the properties of and right-click on it. Select "Properties" from the menu then select the "Port Settings" tab to get the window below.



This page allows configuration of the basic device COM Port Number. To access more advanced settings, click on the "Advanced..." button to display the advanced properties page (shown below).

This page will allow COM port number to be altered:



Driver installation fails and Windows XP gives error code 10

Windows error code 10 indicates a hardware error or failed driver installation. This error may appear if a device has insufficient power to operate correctly (e.g. plugged into a bus powered hub with other devices), or may indicate a more serious hardware problem. Also, it may be indicative of USB root hub drivers being incorrectly installed. Please uninstall the PD2800 virtual COM port and re-install driver again. Or please contact the Posiflex technical support department.